

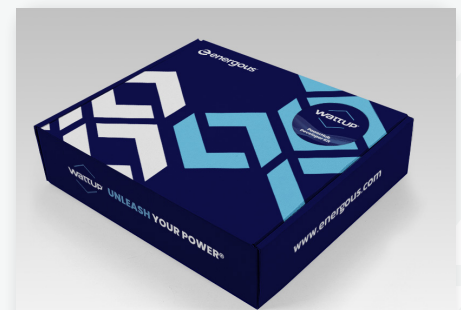
WattUp® PowerHub Developer Kit

WATTUP®

Enabling Faster Integration of Energous' WattUp Wireless Charging Technology Into Customer Product Designs

The WattUp PowerHub reference design transmitter incorporates the DA14682, DA4100, EN3921 and EN3913M devices. The DA4100 is a highly integrated system-on-chip (SoC) Wireless Power Transfer (WPT) transmitter IC, the EN3913M is a highly-efficient, GaN power amplifier (PA) controlled by the EN3921, while the DA14682 is a Bluetooth low energy 5.0 SoC with enhanced security and integrated FLASH memory.

On the receiver side, the DA2223 RF-to-DC receiver can be connected to up to four antennas and the DA14585 is a size-optimized, ultra-low power Bluetooth low energy system-on-chip ideal for small form factor product designs.



Kit Contents

- Reference Design Transmitter Hardware
- Reference Design Receiver Hardware
- Mobile App to monitor & control TX/RX
- TX/RX Schematics and Layout files
- TX/RX Antenna Design files
- TX/RX Mechanical files
- Firmware SDK

Simple Implementation

- Flexible designs that can fit into multiple transmitter and receiver designs
- Universal transmitter supports variety of receiver devices charging at the same time "one to many"
- Single PA/antenna non-beamforming
- Lowest BOM for Tx and Rx
- Smallest Tx Size

User Friendly Experience

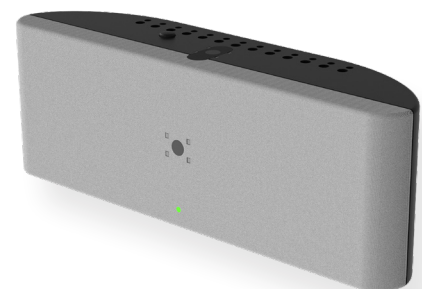
- Over-the-air distance charging interoperability

Advantages

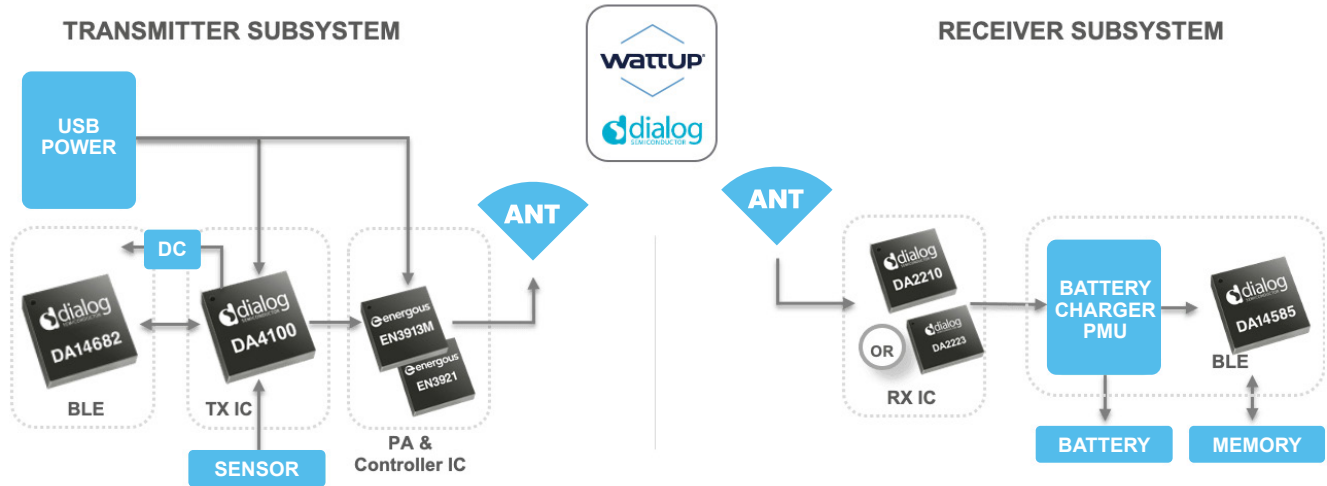
- Ready to evaluate WattUp transmitter and receiver platform technologies
- Faster TX solution integration through optimized design
- RX capable of charging small form factor and large consumer devices
- Proven FW SDK already supporting Dialog BLE device
- RX detection and management for multiple simultaneous charging devices

Scalable Architecture

- Scalable Tx architecture to go for higher power and higher distance



WattUp PowerHub Wireless Charging Developer Kit Block Diagram



Applications

- Smart Speakers
- Gaming Consoles
- Desktop Speakers
- WiFi Access Points
- Computer monitors
- Teleconference Equipment & More

Wireless charging transmitter supporting groundbreaking at-a-distance charging

- Small size and cost optimized BOM using optimized WattUp technology
- Scalable performance up to 5.5 W of conducted power using a single WattUp PA
- Charging Zone up to 15cm
- Optimized antenna for performance design fitted to product mechanical requirements

For more information or to order,
please contact: sales@energous.com

This publication is issued to provide outline information only, which unless agreed by Energous Corporation may not be used, applied, or reproduced for any purpose or be regarded as a representation relating to products.

Energous, WattUp, and the Energous and WattUp logos are trademarks of Energous Corporation. All other product or service names are the property of their respective owners. © Copyright 2019 Energous Corporation. All rights reserved.